



P.T. Barnum Brings Jenny Lind to America...Again

by Katie Callam

“The Jenny Lind mania still continues, like a snow ball, which – *crescit eundo* – grows larger as it rolls.” – “Jenny Lind in the Metropolis,” *The New York Herald*, September 5, 1850

With the success of the recent movie musical *The Greatest Showman* (released December 2017), interest in Swedish soprano Jenny Lind (1820-1887), “still continues” today as it did in 1850. Rebecca Ferguson (who, like Lind, was born in Stockholm) plays the opera star coaxed to the United States by the legendary showman P.T. Barnum, played by Hugh Jackman. In a departure from the historical record, Ferguson’s Lind falls for the married Barnum, setting up a central conflict in the film. Though some reviews of *The Greatest Showman* were tepid, audiences embraced the upbeat, pop-heavy soundtrack and family-friendly story. The movie-Lind’s power ballad “Never Enough,” written by Benj Pasek and Justin Paul, claims many YouTube covers and was performed by contestants on the most recent seasons of NBC’s *The Voice* and ABC’s *American Idol*. Despite its popularity, the film might leave viewers wondering: why has Lind’s star power endured to the present? And how did she become a cultural phenomenon in the first place?

In the U.S., the phenomenon began with Barnum. Following a ten-year career singing leading roles in opera houses across Europe, the so-called “Swedish Nightingale” had retired in 1848. But the profit-minded showman convinced her to undertake an American concert tour. In a February 20, 1850 letter to the editor

of the *New-York Daily Tribune*, Barnum claimed that his true intent was to expose the country to a magnificent artist:

“... I assure you that if I knew I should not realize a farthing profit, I would yet ratify the engagement, so anxious am I that the United States shall be visited by a lady whose vocal powers have never been approached by any other human being, and whose character is charity, simplicity and goodness personified.”

Almost immediately, the publicity Barnum generated began to feed off of itself. “The all-absorbing topic in the saloon, the hotel, and the family circle is the distinguished stranger [Lind];” noted one newspaper. When she arrived in New York for her first set of concerts, crowds stampeded and concerts quickly sold out. Lind was the darling of the press, with her movements in any given city reported across the country. “Lind mania” spread beyond the east coast when she performed in cities including New Orleans, Memphis, Madison, and Cincinnati.

Historians have pointed to Lind’s impeccable reputation and charitable giving as factors in her mass appeal: she was a woman of the stage who nevertheless embodied her Christian faith. During the eight months she toured with Barnum, Lind reportedly donated upwards of ten thousand dollars to charities including the New York City Fire Department Fund and several orphan asylums.

continued on page 2

Note from the Director

Summer has a much different feeling at the museum than the other seasons of the year. In some respects, it seems quiet. We have fewer events on the calendar, fewer school children on the premises, and most of the time, no new exhibitions opening. But in actuality, it is not a quiet time at all, as we see an uptick in visitors on weekdays, and the few events that we do have—Swedish National Day, Midsommar, Smörgåsbeer and Crayfish are big celebrations! It is actually our busiest time of year for our educational programs—it's just that they are off-site at libraries across our tri-state area. And, of course, weddings, weddings, weddings (37 between May and October!). Behind the scenes, each staff member is busy with something, whether it is wrapping up the closing of the fiscal year, planning for the next series of exhibitions, or for putting plans in place for the upcoming year's programs and activities.

As I reflect on the upcoming summer, I hear each activity as its own instrument creating the rhythms and hum of a tune punctuated by bursts of sound and joy, moving in and out. Music is a language, but the beauty of it is that you don't have to know the language in the technical sense to understand and enjoy it! It speaks to our spirits, bypassing our minds. That's why music is such an accessible way to bridge cultures, too. This summer's newsletter, and several of our summer activities revolve around music. I hope you will consider introducing some of your friends to the museum this summer through the music.



Tracey Beck

PT. Barnum Brings Jenny Lind to America...Again continued from front cover

Of course, Lind's personality was only one factor: there was also her voice, with its wide range and beautiful tone in its high register. By contrast, Lind's musical number in *The Greatest Showman*, "Never Enough" (sung by Loren Allred), is in a lower range than would have been comfortable in Lind's voice and its musical style is very different from nineteenth-century opera repertory. After her first Boston concert, one paper did not even attempt to describe Lind's voice: "Vain – lunatic would it be – to attempt to describe the qualities of Jenny Lind's voice. The soul felt every trill of her melodious utterance – the whole air seemed to vibrate with her sweet and astonishing eloquence."

The memory of Lind's tour – of her personality and her voice – was kept alive in the decades after her 1852 return to Europe through both objects and music. The seemingly endless array of Lind-inspired knick-knacks produced in the 1850s have lived on in museum collection: figurines, cups and saucers, medals, cigar boxes, and glass bottles, to name but a few. Lind's repertoire ended up in thousands upon thousands of parlors during the nineteenth century in the form of sheet music, often

purchased by or for young, white, middle-class women to sing at home. Today, major collections of "Lindiana" are held at the ASHM, the New-York Historical Society, and Stanford University.

As Lind did not live into the era of recording technology, her voice can now only be heard where memory and imagination intersect: perhaps the unknowableness of her voice is part of its allure.

Watching *The Greatest Showman*, we do not hear what nineteenth-century audiences would have heard. But we do, in a way, get a taste of their experience. The film, writes the *Guardian's* Caspar Salmon, "though hokey and trite at its core [...] offers a genuine rush of spectacle and wonder." With its help, we too can leave the theater excited by – perhaps even humming – the songs we just experienced.

Katie Callam is completing her PhD in historical musicology at Harvard University. Her dissertation explores how music history was crafted during the early twentieth century in the United States and includes a chapter on the Jenny Lind centennial celebrations of 1920.

Hear the Work of Jenny Lind Live:

The 2018 Jenny Lind Scholar, Kine Sandtrø Performs at Gloria Dei Church on June 8th, 2018



The music of Jenny Lind will be brought back live and in person at a very special concert at Gloria Dei (Old Swede's) Church on the evening on Friday, June 8th, with Norwegian soprano, Kine Sandtrø, as the 2018 Jenny Lind Scholar and will be

accompanied by Julia Sjöstedt. An original piece written for Lind, entitled "Jenny Lind's Greeting to America" has been located at the University of Pennsylvania, in the Keffer Collection of the Kislak Center at the University Library. The 2018 Jenny Lind Swedish scholarship winner, Kine Sandtrø has been asked to sing this as a part of her concert. Since the original Jenny sang at this church in 1850, it will be the first time this music has been heard in 168 years!

The June 8th concert at Old Swedes Church in South Philadelphia is a benefit for the Gloria Dei Historic Preservation Trust and the Augustana Institute. Kine is a student at the Royal School of Music in Stockholm and won a national contest to tour America. Her accompanist is Julia Sjöstedt who studies at the Academy of Music in Stockholm. Both young women will present a varied program of Nordic folk music and Opera arias in the near-perfect acoustics of Pennsylvania's oldest church. See the calendar of events for ticket information.

New on View



A new painting was installed on the ASHM's balcony in early May. Dr. Kirsten Jensen, a collector of Scandinavian art, loaned a massive painting by Norwegian-American artist Jonas Lie. This painting, *The Fleet*, depicts a Norwegian fjord and fishing boats in an ethereal, impressionistic style.

Child of a Norwegian father and American mother, Lie immigrated to the U.S. in 1893. After several years of schooling, he began designing calico shirts at a New York cotton mill to support his family. Lie's years at the cotton mill and intermittent lessons formed the backbone of his art education. He did not pursue painting full-time until 1906.

Lie's paintings quickly drew attention, appearing in hundreds of shows and even in the Oval Office during Franklin Roosevelt's presidency. Despite Lie's critical acclaim in America, Norway's mountains and seas remained the artist's greatest inspiration.

Even while painting the coasts of New England, Lie noted that "the keys and chords and harmonies of my work come from the North." Lie's paintings transport viewers to ethereal memories of the artist's homeland.

New Faces at ASHM

The Museum has had several new staff members join us (or who are about to join us!) in 2018. We hope that you will have a chance to meet them soon and welcome them to the community!

Elin Karlsson, *Weekend Manager*



Elin moved to South Jersey from Sweden in mid-2015 after a quick stop in California. The move to the East Coast was the result of her husband being accepted to medical school in the area. She became acquainted with the American Swedish Historical Museum through a Google search, which quickly led to a few visits and then involvement in both Midsommarklubben and Smörgåsbeer. She is about to graduate from Camden County College with an Associate's Degree in Languages and International Studies and hopes to continue her studies in political science later this fall.

Hampus Öberg, *Marketing Assistant*



Hampus was born and raised in Stockholm, Sweden and will be joining the Museum as our new marketing trainee! He is a recent graduate from the

Stockholm School of Economics, with masters' degrees in finance and international management. One of Hampus's biggest passions is photography, and he has been running his own portrait and wedding photography business for several years alongside his university studies. Growing up he would spend the summers sailing in the Stockholm archipelago or hiking and picking berries in the forests of northern Sweden, which has turned into a love for the outdoors. He is looking forward to becoming a part of the ASHM community and participating in all the Swedish traditional celebrations at the museum!

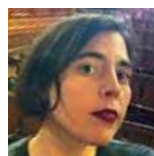
Ann Charlotte Storer, *Gift Shop Manager*



Born in Sweden, Ann Charlotte moved abroad almost 20 years ago to live and work in the small country of Luxembourg in the center of Europe. After

meeting her husband, their family of four eventually moved to the Philadelphia area in 2009. Her early career was in the financial and banking world, but she has more recently started working as a translator, as she always loved languages. She translates material from English into Swedish and is fascinated by the importance that language has in our society, and how it develops and changes all the time. Ann Charlotte is excited to work as the Gift Shop Manager and hopes to keep the shop full of fun and interesting products that relate to Sweden and Scandinavia!

Mabel Rosenheck, *Weekend Manager*



Mabel Rosenheck is a writer and historian who lives in South Philly and works at the Wagner Free Institute of Science. Her writing has appeared in *The Toast*, *Vice*

Sports, the *Mad Men*, *Mad World* anthology, and elsewhere. She has a PhD from Northwestern University in media and cultural studies.

Upcoming Events and Registration Info

To Register For Events

call 215-389-1776, or visit online at
www.americanswedish.org/calendar.htm

There is always something going on at the American Swedish Historical Museum. See below for scheduled events. Please check with the Museum to confirm dates and other details. Refunds will not be granted for cancellations after the registration deadline. To register for events by phone call (215) 389-1776. Online registration is available through links in the Museum's email announcements or on the Events Calendar page of our website, americanswedish.org/calendar.htm.



MONTHLY PROGRAM: Toddler Time

10:30 am - 11:30 am

The third Tuesday of each month ASHM offers specially designed programs to introduce Swedish culture through art, science, and literature in fun and creative ways to children ages 18 months to 4 years old. The cost is \$5 per child or free for museum Household Members. There is no charge for accompanying caregivers. Optional pre-registration by phone or online.

Tuesday, June 19: Soccer Fever

**Tuesday, July 17: The Ways We Go,
Transportation**

Tuesday, Aug 21: Summer in Sweden

Tuesday, Sept 18: Harvest Fest!



Swedish National Day Wednesday, June 6 10-3pm

What better place to celebrate Swedish National Day than at the American

Swedish Historical Museum! Enjoy free admission including guided tours at 11am and 2pm highlighting the history of the museum, and a special Swedish summer dessert treat.

Save the dates!

Be sure to mark calendars for these exciting events:

**Saturday, November 10th: New Sweden
History Conference**

Friday, November 30th: Julbord

Saturday, December 1st: Lucia

Concert with 2018 Jenny Lind Scholar, Kine Sandtrø Friday, June 8th, 7:30pm

**At Gloria Dei Church (Old Swede's),
916 Swanson Street, Philadelphia, PA**
The Royal Stockholm School of Music has selected young Norwegian soprano, Kine Sandtrø, as the 2018 Jenny Lind Scholar! She will be accompanied by Julia Sjöstedt who is studying piano at the Academy of Music in Stockholm. For one night only, this talented pair will recreate a summer evening of song from 1850 when the original Jenny Lind sang at Gloria Dei (Old Swedes') Church. Enjoy this program of Nordic folk music and opera arias in the near-perfect acoustics of Pennsylvania's oldest church! Suggested donation: \$20/adult and \$10/student, pay at the door.



World Cup Viewing Party: Sweden vs Germany Saturday, June 23, 2pm-4pm

Come and cheer on the home team! Catch every play on our big screen projector and speaker system in the air conditioned Josef Frank Gallery. Ticket price includes admission to our Midsommar event right after the game. Cash bar and food available for purchase. Admission: \$8 for Members, \$12 for Non-Members. Children 4-12 \$5. Online pre-registration is recommended for the watch party and tickets can be purchased through the events page on our website.



Midsommarfest Saturday, June 23, 4pm-7pm

Celebrate summer at our annual Midsommarfest, complete with food, drinks, home-made Swedish pastries, live music, maypole dancing, as well as free games for the kids. Members \$8, Non-members \$12, Children 4-12 \$5. Pay at the door.



SmörgåsBeer Saturday, July 21, 5pm-8pm

Spend a summer evening sampling local Philly and International lagers, ales, stouts, and more all paired alongside a spread of Swedish inspired eats. Enjoy all of this along with lawn games, trivia and groovy tunes provided by a DJ. Tickets are \$30 in advance, \$35 at the door, with a special designated driver price of \$10. Register online or by phone.

Summer Concert- OSKAR STENMARK TRIO Friday, August 3rd, 6:30pm-8:00pm

Head over to ASHM for a free summer evening concert on the Terrace. The OSKAR STENMARK TRIO combines traditional Swedish melodies with improvisation and New York jazz sounds. Feel free to bring a picnic blanket or a lawn chair and enjoy the smooth tunes among the fireflies. Cash bar and food will be available to purchase food and drinks throughout the evening.



Crayfish Party Friday, August 17, 6:30pm

Get a taste of Swedish summer at our annual Crayfish Party! Enjoy a buffet of crayfish and Swedish meatballs, along with crisp bread, cheese, potatoes, cheese pie, and glass of akvavit all outside under our beautiful lighted and decorated tent. \$50 for ASHM and SACC Philadelphia members, \$60 for non-members. Register by phone or online by August 13th.

The Sami Reindeer People of Alaska and Sami Walking with Reindeer Current Exhibits on View through August 26th

Be sure to visit our current exhibits The Sami Reindeer People of Alaska and Sami Walking with Reindeer before they close on August 26th. Check out our website for more information. <http://www.americanswedish.org/exhibitions/special-current>

Annual Meeting Sunday, September 16, 3pm

ASHM members are welcome to join us for our annual meeting, where we will present the Amandus Johnson Volunteer Service Award. This day will also mark the opening of our next special exhibition, From the Heart, Made by Hand: 80 Years of Hemslöjd at ASHM.

Summer Concert Ann-Marita Scandinavian Roots Friday, August 31st, 6:30pm-8:00pm

Be sure to check out our second ASHM free summer evening concert on the Terrace. Norwegian musician Ann-Marita will bring the audience along on a journey through the centuries as she performs Scandinavian folk, contemporary, and original songs centered around stories about Scandinavian immigrants in the United States. Cash bar and food will be available to purchase throughout the evening.

Images from Recent Events

Photographs by ASHM Staff

▶ Delicious semlor prepared by the Auxiliary for our Semlor & a Movie event in February

▼ Easter witch dress-up at Easter Family Fun Day in March



▲ How many can you find?! Easter egg hunt on the lawn in front of the museum



▲ We had many exciting items to bid on in our Spring Ting auction this year!



◀ ASHM's Tracey and Trevor with Marlene Wisuri and Nathan Muus from the Sami Cultural Center of North America at the opening of The Sami Reindeer People of Alaska in April



▲ Marlene Wisuri introducing our latest exhibit, The Sami Reindeer People of Alaska



▲ Children dancing to ABBA in the grand hall at Toddler Time in February



▲ Spring Ting guests enjoying a delicious dinner prepared by Jeffrey Miller Catering



◀ Chairman of the Board Erik Muther and Treasurer of the Board James Walker at Spring Ting

▶ The guest of honor at Toddler Time in April, 3-week-old calf Daffodil!



Contributions

Do you want to make a contribution? There are several easy ways to support us. Visit our web page americanswedish.org/support or call **215-389-1776** for more information.

Thank You for Another Wonderful Spring Ting

Thank you to everyone who joined us at Spring Ting and helped celebrate the Museum's 92nd year! We would also like to say special thanks to our generous Spring Ting corporate sponsors and donors, our honorary guest Carina Bergfeldt, Jeffrey Miller Catering for the delicious dinner, Karin Hampel for playing the piano so beautifully for us during the cocktail hour, and to the Spring Ting Committee for helping us plan another successful event.



We were so thrilled to welcome Carina Bergfeldt back to the Museum and to honor her with the 2018 Outstanding Achievement Award. Having reported on some of the world's greatest catastrophes and now connecting Swedes with America as Swedish Television's U.S. Correspondent, it is hard to think of anyone more deserving for this year's award!

Corporate Sponsors

Biddle & Company
Kreischer Miller
Philadelphia Energy Solutions
Whibco

Benefactors

Sylvia Davenport
Roy & Donna Johnson
Paul Muther & Ulla Dagert-Muther
Mary Wagner

Sponsors

Bo & Ragnhild Bergqvist
Carin & John Foster
Gene & Mary McCoy
Kristina & John O'Doherty

Patrons

John & Kristina Antoniadis
Leonard Busby & Ruth Lindeborg
Robert & Ingrid Cagan
Ginny Swedberg
Thomas & Julia Patterson
Sandra Pfaff
Rev. Dr. Kim-Eric Williams & Ruth Nelson Rizzi

Friends

Roni Christensen
Lila McCleary
Mary Anne Powell
Fanny Warren

New Members

February 1 through April 30, 2018

Life

Monica & Lakota Kruse

Friend

John Lundin

Organizational

Ludington Public Library
Household
Ursula Avallone
Jim Battista
James & Sonia Benner
Cynthia & Bruce Brandt
Ernest Brattstrom
Sarah Christian
Leslie DiNardo
Josh Duckwitz & Toby Ranck
John Evenwel
Cara Grugan
Ned Hawkins & Lacy Clayton
Kristin Hoxha
Erin & Mark Hudson
Rochelle Humphrey-Burton
Daniela Laurinavichyte
Zhorong Li
Robert McCrea
Virginia McGlone
John Patterson
Tom & Clarissa Pugh
Lillian M Quap
Anne & Mark Stewart
Beverly Walker
Alexandra Weaver
Violet Zakhary & Family

Household

Tiller Family

Individual

Tracey Smith

Senior/Student

Laura Aumann
Sven Fitzgerald
Lainey Jenks

Donald R Johnson
Kathleen Leef
Karen Owens
Harry Schaeffer
Denise Costello
Joan Francis
Margaret Testa

In Memoriam

The ASHM lost some very special members in the last few months. We send our deepest condolences to their friends and family.

Al Ostrand
Patricia Rathbun

Contributions

February 1 through April 30, 2017

Serafimer

Margaretha Talerman

Vasa

Kristina and John Antoniadis
Kristina and John O'Doherty
Swedish Colonial Society

Gold

William & Tracey Beck
Ragnhild & Bo Bergqvist
Roy & Donna Johnson
Britta A. Mattson
Sandra & Fred Pfaff
Fanny Warren

Silver

Roberta Petusky
Abby Shaw
Alice Wood
PEW Charitable Trust

Bronze

Jens & Allison Clausen
Ken & Kerstin Cook
Mary Corrigan
Rik Edstrom and Lea Knapik-Edstrom
ExxonMobil Foundation
Joseph M. O'Donnell
Earl & Sylvia Seppala
Edie & Al Rohrman
Ellen T. Rye

Friend

Alice Christensen
Community Explorers Day Services, Inc.
Mr. & Mrs. Evald R. Eskilson
Barbara E. Good
Marlin R. Mattson, M.D.
Ellen T. Rye
Birgitta Wilson
Alice (Roni) Christensen
Ed & Margaret Devinney
Kathy McCracken

From Opera to ABBA: Music in Sweden!



In order to reach a wider family audience, the American Swedish Historical Museum creates a new summer library outreach program each year within the national Collaborative Summer Reading theme.

The 2018 theme is "Libraries Rock," and ASHM will introduce families to the music of Sweden. This rocking program will have kids dancing and singing in the book isles. Families will get an introduction to classical opera, traditional folk, ABBA, and even discover the Swedish musicians of today. Children will explore Swedish culture and how music is integrated into daily life and holiday traditions while performing an opening operatic warm-up, collaborative choral song, fanfare fiddle craft & folk dance finale. Families can keep the fun times rolling on the ride home with a take-home CD of traditional and contemporary Swedish music!

As always, we hope to bring the program to as many libraries and community centers as possible. The program can travel throughout Pennsylvania, Delaware, and New Jersey so if you are interested in having From Opera to ABBA: Music in Sweden at your library this summer, be sure to pass on the museum's information to your local librarian!

Sign Up Now to be Swedish in Seattle



Our itinerary for the Seattle trip has finally come together! We are excited to announce our plans to visit Seattle September 20-September 24. The trip will include a visit and tour of the new Nordic Museum, with Director Eric Nelson, lunch at their new Café Freya, a tour of the Ballard Locks, a visit to a Swedish bakery and dinner at the Swedish Club. We will also see classic Seattle sites such as the Space Needle, Chihuly Glass and Garden, an Underground tour, Pike Place Market, and harbor tour with Argosy Cruise, as well as a day trip to nearby Woodinville for lunch and a winery tour and tasting, with a stop at the beautiful Snoqualmie Falls.

The cost for the trip will be \$2250 per member double occupancy (\$515 additionally for single occupancy) and \$2350 per non-member double occupancy (\$515 additionally for single occupancy). This will include four nights and four breakfasts the Hotel Andra, entrance fees to all attractions and tours, three lunches and one dinner, charter bus transportation, as well as airfare on American Airlines.

The deadline to register for the trip is July 13th. For a more detailed itinerary or questions about registration, please contact Caroline Rossy at crossy@americanswedish.org or (215) 389-1776, ext. 108.



Won't You Join Us?



Do you know anyone who is curious about joining the ASHM, but not ready to commit to a full year of membership? Or perhaps a family looking for low-cost, fun summer activities? Help us spread the word about our new summer membership option. You can also give it as a gift to friends and family!

ASHM's Summer Membership is a new seasonal offer that will allow you to get to know the Museum, take advantage of our exhibitions and programs, and experience the beautiful surroundings of FDR Park in the summertime.

Summer members will have access to the Museum from Memorial Day through Labor Day weekends (May 26th-September 1, 2018). The cost of the Summer Membership is \$30, and it can be purchased on our website.

You and your household will receive free general admission for the duration of the membership, along with three guest passes, discounted admission to our events and programs, as well as a 10% discount in the Museum Shop. This is the perfect opportunity to get to know the ASHM if you have been curious about the Museum, and is ideal for local families looking for things to do during the summer break from school. We hope that you will join us!

World Cup Watch Party:

Sweden vs. Germany June 23rd 1:30-4:30pm

Come cheer on the home team and take advantage of discounted tickets for members! Sweden is playing Germany in the World Cup on June 23rd at 2pm. What better place to get your Swedish pride on than at the American Swedish Historical Museum game day watch party! Catch every play on our big screen projector and speaker system in the air conditioned Josef Frank Gallery. The best part is that your ticket price includes admission to our Midsommar event right after the game. Cheer on Sweden then dance around the Maypole and enjoy the perfect summer evening on the Museum terrace in FDR Park. Cash bar and food available for purchase. Admission: Members \$8, Non-members \$12, Children 4-12 \$5. Online pre-registration is recommended for the watch party and tickets can be purchased at <http://www.americanswedish.org/events>.