

# Annual Report FY 2022

July 1, 2021 — June 30, 2022



## WHAT A COMMUNITY!

Our supporters voted, and a South Philly underdog won!  
(cue Rocky theme song)

The American Swedish Historical Museum was voted Best Museum in Philadelphia for 2021 in Metro Philadelphia's "Best of" contest. This was only one of many indicators that the museum is growing strong. We also had a great year for attendance – with daily visitation rebounding to pre-pandemic levels. In fact, the *Tattoo: Identity through Ink* exhibition drew more visitors per month than any exhibition we have hosted in the last 10 years! It was also our peak year for rental events with a total of 52! This figure doesn't include the nine families and organizations from our community that used the museum for meetings, retreats, and other types of celebrations for reduced or no fee. We are also seeing progressive growth in the number of people buying memberships at the museum.



All of these indicators are encouraging for a year where we continued to adapt how we conducted programs and struggled to fill staff positions in a tight labor market. Behind the scenes, we have also been laying the groundwork for our next Strategic Plan and our 100th-anniversary capital campaign. We invested in infrastructure like a new computer server and continued caring for our beautiful building with maintenance projects. It's been a year of stretching, and it is great to know that our community is growing with us.

In this report, you will see a summary of the ambitious, mission-oriented programming that we delivered to continue Connecting Cultures and Communities. We mounted five exhibitions, hosted a plethora of in-person and virtual events, and offered programming out in the community at libraries, rec centers, schools, and other museums! We continued to build relationships with other non-profits and community groups as we supported each other with joint programming, planning committees, and meeting space.

It's been an exciting year, and we're glad that you have been a part of it with us!

*Tracey Rae Beck*

Tracey Rae Beck  
Executive Director

Minnesota artist Cindy Lindgren created this beautiful drawing of the museum which is now featured on products in the Gift Shop including note cards, stickers, prints, and a stainless steel water bottle!



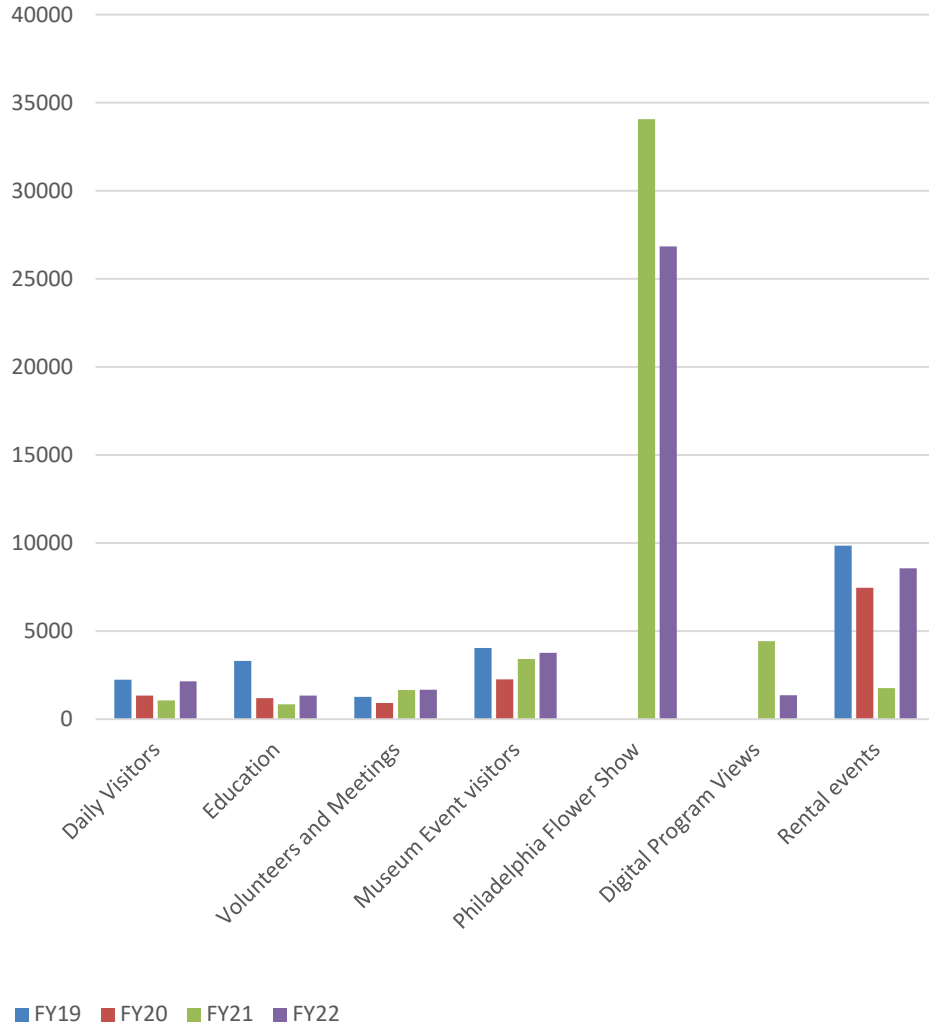
# ATTENDANCE

## Total Visitation

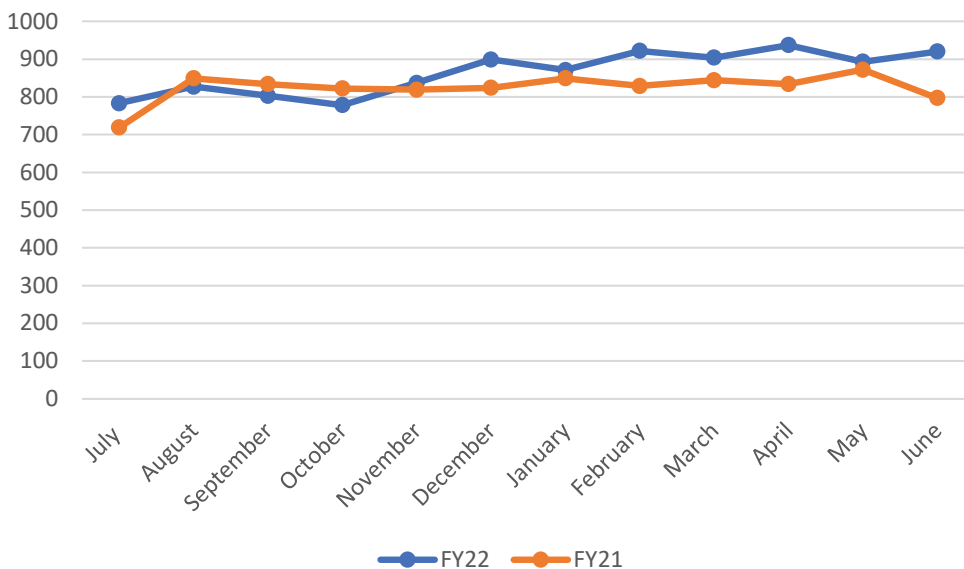
FY19	20,726
FY20	13,217
FY21	47,256
FY22	45,717



FY19-22 Attendance by Category



# MEMBERSHIP GROWTH



Our Membership sign and table has helped increase sign-ups during events and the PHS Flower Show.

## EDUCATION PROGRAMS

This was a rebuilding year for our education programming with schools and families. ASHM served over 1,200 students and children through outreach, virtual, and onsite programming.

In September, we released Pippi's Family Guide, a new interactive tool for families with activities to do in all permanent galleries. The guide prompts families to look closely at objects and artwork through games, touch tables, and questions. We also updated the education website page to streamline the information for teachers and parents looking for programming. They can now request tour programs online through the website.

This year we brought many family programs back in person. Toddler Time began again in September with a Dala horse theme. We had a great first program back with a museum tour, activities, and even pony rides for the kids! While we have yet to reach the numbers pre-pandemic, we have heard from many parents how excited they are that Toddler Time has returned.

Our other holiday programs such as Lucia performances and Easter Family Day were back in full force. For Lucia this year we had over 20 families participate in the Lucia performances during the two-day event. The performances were shortened and took place outside due to COVID concerns. Families were happy to have this holiday tradition back and shoppers enjoyed the songs too! Easter Family Day reverted to the standard format of indoor crafts with almost 100 people in attendance.

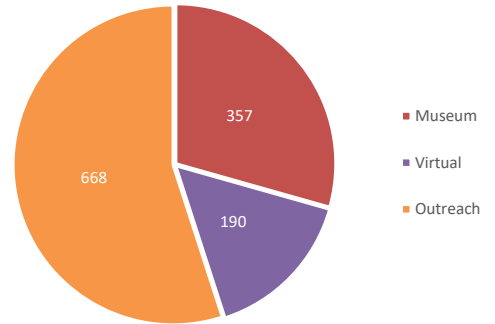
In addition to our annual family events, ASHM partnered with FDR Park on new environmental-focused family programs. First, we partnered for a few plogging days in the park. Plogging is a Swedish invention of jogging and picking up trash that became a worldwide craze in 2018. Second, we held a free Family Earth Day program during Earth Week and partnered with the Meet Me at the Museum program to provide activities, crafts, free books, and learning opportunities.

It was refreshing to welcome students back into the building to learn about Pippi Longstocking, vikings, and Lucia traditions! In addition to onsite field trips we had several virtual field trips this year and we hope to keep expanding our offerings.

Once again, our outreach programming reached the greatest number of students and families. In the summer of 2021, ASHM educators served over 400 kids through our library and summer camp outreach. Our library outreach, *Stories of Sweden's Wild Animals* was taught virtually. In partnering with CraftNOW we visited 13 summer camps at Philadelphia recreation centers with the *Voyaging Vikings* outreach program.

In the fall, we participated in two educational outreach programs. A STEM Day at American Helicopter Museum in October reached 78 families. The CraftNOW Create event in November reached 200 families during the event and another 100 through craft kits dispersed by Philly Parks & Rec to afterschool programs. We are glad we can take part in these community programs and share our offerings with families in the Philadelphia region.

FY 22 Education Program Attendance



## PUBLIC PROGRAMS

This year the Museum continued to offer virtual programming to meet the needs of those at home and engage with long distance audiences while simultaneously returning to in-person offerings and developing new opportunities.

The success of the Virtual Field Trip Friday program series continued with tours highlighting Norse art at the Museum of Cultural History in Norway, a look at Finnish history at the National Museum of Finland, stunning architecture at Skokloster Castle, rural life of Swedish immigrants at the Bishop Hill Heritage Museum, and a behind-the-scenes look at monarchies through the centuries at the Royal Palace in Stockholm. Additionally, ASHM offered Dala horse painting and rya rug hemslöjd craft workshops, an exhibition opening, and lectures virtually. New virtual programs included a member's discussion series which provided the opportunity for Museum members to gather from across the country and interact with each other and experience exclusive learning opportunities from staff. ASHM also expanded its offerings with a new virtual Finnish Language class.



Along with our online offerings, ASHM worked to bring back in-person programming. The Crayfish Party was again held in August with a sold-out dinner and the Lucia Outdoor Christmas Market broke all former attendance records for the event! The much beloved holiday Museum Tour and Glögg Tasting also returned to in-person this year with the new addition of the Danish treat, *aebleskiver*.

The New Sweden History Conference was presented for the first time in a hybrid format. It was held in-person at Winterthur Museum, Garden, and Library in Delaware and simultaneously online via Zoom. The conference topic, *Bridging Many Worlds: Exploring Concepts of Changing Cultural Identities in the New Sweden Colony*, addressed how the experiences of migration affected traditional customs and concepts of identity during the period 1638–1776, and how it continues to exert influence today.



In October, ASHM was thrilled to partner with the Philly Pops to present ABBA After Dark! A preview event at the Museum to promote their upcoming ABBA concerts. The sold-out event was a huge success and fans were off their feet dancing the night away under the bright lights of the tent on the Museum Terrace. The music continued in May when ASHM hosted our own, second annual ExtrABBAganza Dance Party! Again, the event was held on the terrace to provide a safer environment and featured new performers who hosted our iconic dancing queen and costume competitions.



In February, we held a successful reception for the *Tattoo: Identity through Ink* exhibition in partnership with Villians Arts to welcome Philadelphia Tattoo Convention vendors and attendees. This reception had over 100 attendees, most of whom were first-time visitors from across the nation.

In June we returned to nature as we hosted the Philadelphia Flower Show in our galleries. The theme of the Flower Show was "In Full Bloom" and provided an opportunity for horticulturalists to explore the restorative and healing power of nature and plants. This is a tenet that Swedes share and especially embrace while dancing around the maypole and spending time outside during Midsommar. Both events were well attended, although visitation was lower than the 2021 Flower Show. However, ASHM welcomed nearly 27,000 visitors over 10 days to the Museum!

## EVENTS & PROGRAMS

Type: **M** = At the Museum **H** = Hybrid **V** = Virtual

Event	Type	Date
Members Chats: Meet the Curator	V	July 14, 2021
Exhibit Members Preview: <i>American by Craft: The Furniture of Olof Althin</i>	H	July 22, 2021
Smörgåsar Beer in Your Backyard!	V	July 29, 2021
Lecture: <i>The Park, The Prince, and the Plan</i> , by Thomas Keels	V	August 11, 2021
Crayfish Party	M	August 20, 2021
Plogging in FDR Park	M	August 21, 2021
Field Trip Friday: Museum of Cultural History, Norway	V	August 27, 2021
Field Trip Friday: National Museum of Finland	V	September 10, 2021
Annual Meeting	H	September 12, 2021
Exhibit Opening: <i>Fika! The Art of the Swedish Coffee Ritual: Watercolors by Jan Padover</i>	M	September 12, 2021
Fall Session Swedish & Finnish Language Classes (10 weeks)	V	September 13, 2021
Toddler Time (Monthly through May)	M	September 21, 2021
Danish Kransekake Baking Demonstration	V	September 26, 2021
Field Trip Friday: Skokloster Castle	V	October 8, 2021
Member Chats: Favorite Museums	V	October 13, 2021
New Sweden History Conference: <i>Bridging Many Worlds: Exploring Concepts of Changing Cultural Identities in the New Sweden Colony</i>	Off-Site	October 23, 2021
ABBA After Dark: Partnership with Philly Pops	M	November 4, 2021
Plogging in FDR Park	M	November 13, 2021
Shop from Home Evening	V	November 18, 2021
Luciafest & Outdoor Christmas Market	M	December 4 - 5, 2021
Museum Tour & Glögg Tasting	M	December 29, 2021
Member Chats: Favorite Scandinavian Recipes	V	January 12, 2022
Rya Rug Workshop	V	January 15, 2022
Swedish & Finnish Language Classes (10 weeks)	V	January 24, 2022
Genealogy Meeting	V	January 29, 2022
Pea Soup Dinner To-Go	–	January 29, 2022
Exhibit Opening & Guided Tours: <i>Tattoo Identity Through Ink</i>	M	February 5, 2022
Semlor To-Go	–	February 12, 2022
Villain Arts Tattoo Convention Reception	M	February 24, 2022
Field Trip Friday: The Royal Palace	V	March 18, 2022
Guided Swedish Easter Candy Tasting	V	March 24, 2022
Dala Horse Painting Hemslöjd Workshop	V	April 2, 2022
Lecture: <i>Tattoos for Human Health, the Future of Smart Tattoos</i> by Dr. Carson Bruns	V	April 7, 2022
Easter Family Day	M	April 10, 2022
Member Chats: Swedish Easter Witch Traditions	V	April 20, 2022
Field Trip Friday: Bishop Hill Heritage Association	V	April 22, 2022
Plogging in FDR Park	M	April 23, 2022
Earth Day Family Program	M	April 24, 2022
Spring Ting Dinner & Auction	M	April 30, 2022
ExtrABBAganza Dance Party	M	May 7, 2022
Field Trip Friday: Zorn Museum	V	May 20, 2022
Philadelphia Flower Show	M	June 10-19, 2022
Midsommarfest	M	June 25, 2022
Wawa Welcomes America – Free Admission Day	M	June 30, 2022

## PUBLIC RELATIONS

ASHM received a lot of press coverage this year due to a variety of programs and stories, including several TV appearances throughout the year. Rachel Kiskaddon our Education Manager, appeared live on PHL17 morning program to promote our recycling craft kit for the CraftNOW Create event on November 5th. Our collaborative event ABBA After Dark with the Philly POPS! received coverage from several evening news broadcasts on November 4th including, NBC10, CW Philly, ABC, and CBS Eyewitness News. ASHM was mentioned favorably as a partner in the 2022 PHS Flower Show during the press conference on March 21, 2022, and later in the Flower Show Special that aired in June 2022 on 6abc. We were also featured again in 6abc's "Love The Arts" special during Easter that focused on the Swedish Easter Witch tradition. Our Spring Ting Dinner was also covered with a small segment that aired on the 11 o'clock news on April 30. In other filming news, we were featured on "It's History", a PCN broadcast in August 2021. This public programming offers tours of historic sites and museums in PA.



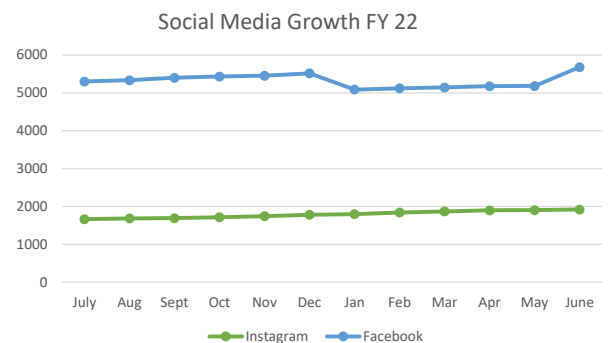
Several exhibits received media coverage as well. The Althin exhibition opening was listed in WHYY's and Philly Mag's "Things To Do" articles in July. The Tattoo: Identity Through Ink exhibition opening was featured in articles by The Philly Voice and WHYY, as well as a WHYY radio interview. We also marketed the exhibition during the Villain Arts Tattoo Convention at a booth where we gave out postcards to convention-goers and by distributing posters to tattoo parlors throughout the region.



We received national and international media coverage, such as the New York Times, related to the conviction of a man who stole several firearms from local historical sites in the 70s. ASHM was one of many institutions that had items repatriated by the FBI in December 2021.

## Social Media

Our overall reach and number of followers have continued to grow across all platforms during the year as can be seen in the chart. We added newly designed elements to posts that elevate our content and created Instagram highlights that allow people to see similar posts together from past events and exhibitions. Throughout the year we have tried to add more interactive media, such as videos, live streams, and stories features. These included a live stream of a Lucia performance at the Christmas Market, various raffle drawings at events, and posting stories to celebrate famous birthdays, achievements, and videos from events.



On Instagram, we launched an interactive Fika Friday poll for the exhibition *Fika! The Art of the Swedish Coffee Ritual*. The weekly dessert polls lasted seven weeks with an average of 155 participants per week. The interactive feature has great potential and we will use it more often to further engage with users. Some of the most popular posts were a Rambo apple post with a reach of over 9,000, a birthday post for Pippi with a reach of over 7,000, and a post about Lucia holiday traditions. On Instagram a boosted post for the Skokloster Castle tour reached over 19,000. We have found that social media ads for events and exhibitions have been successful in raising attendance.

**Fika  
Fridays!**  
Vote for your  
favorite *fika* treat!



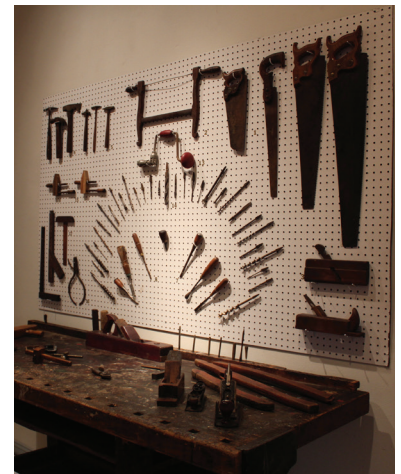
## EXHIBITION HIGHLIGHTS

### American by Craft: The Furniture of Olof Althin

*Changing Exhibition Gallery: July 23, 2021 – January 16, 2022*

The American Swedish Historical Museum reunited the tools, drawings, and furniture of Olof Althin (1859-1920), an immigrant cabinetmaker and antique restorer in turn-of-the-century Boston. Throughout his life, Althin navigated the intersections between immigrant and American, reproducer and restorer, and designer and maker. Poised between these identities, Althin's life revealed the complex position of immigrant artisans as they balanced economic sensibility with adherence to ideal-driven craft movements in the creation of quintessentially "American" furniture styles.

*This exhibition was co-curated by Erica Lome and Trevor Brandt and was generously supported in part by a Failey grant from The Decorative Arts Trust.*



### Fika: The Art of the Swedish Coffee Ritual

*Grand Hall Balcony: September 12, 2021 – January 28, 2022*

This exhibition of original watercolors by Jan Padover featured various desserts traditionally served during Swedish Fika. The paintings were supplemented by artifacts from the museum's collections which interpreted the history of coffee drinking in Sweden.

*This exhibition was curated by Christopher Malone and was generously supported by SWEA New Jersey.*



### Tattoo: Identity Through Ink

*Changing Exhibition Gallery: February 5 – May 1, 2022*

For more than 5,000 years, tattoos have helped document the history of humanity one painful mark at a time. *Tattoo: Identity Through Ink* tells the story of why people have adorned their bodies with tattoos. The exhibition showcases the last 150 years of tattooing in America, from the sideshows in the early part of the 20th century to modern celebrity tattoos. Highlights of this exhibition included tattoo artist Amund Dietzel's traveling trunk, never-before-exhibited tattoo flash by Richard "Sailor Dick" Swanson, and objects and ephemera belonging to Crazy Philadelphia Eddie.

*The artifacts in this exhibition were loaned by Marilyn Mott-Tolleson, Derin Bray, and Troy Timpel of Villain Arts, and were curated by Christopher Malone. The traveling portion of this exhibit was curated by Dr. Lars Krutak and was organized by Vesterheim, the national Norwegian-American Museum and Folk Art School, and supported by funds from the John K. and Luise V. Hanson Foundation, and Jon and Mary Hart. It was made possible at ASHM by gifts from the ASHM Auxiliary, Barbro Osher Pro Suecia Foundation, Midsommarklubben, and an anonymous foundation.*





## Flying to Blåkulla: Letters from an Easter Witch

**Grand Hall Balcony: February 12 – May 1, 2022**

In this exhibition, visitors discovered the Swedish mumming tradition of the Easter Witch (*påskkäring*) through handmade Easter letters (*påskbrev*) passed down through the Batcheler Family. Easter letters given to children during the holiday depicted witches flying to *Blåkulla* (Blue Hill), where they danced and dined with the Devil. Featuring watercolors and drawings depicting witches, dancing children, trolls, and other fantastical things the letters showcased an intriguing archive of Swedish folk art. The exhibition traced the traditions of the Easter Witch from the persecution of witches in the 18th century to the present-day celebration where children travel door-to-door collecting candy. Also on view was a 16th-century copy of the “*Malleus Maleficarum*” (Hammer of the Witch) loaned by the Library Company of Philadelphia.

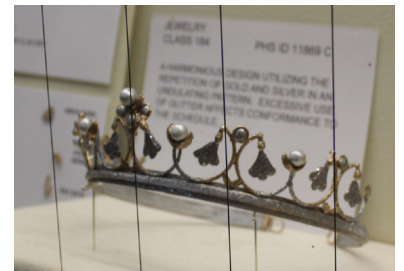
*This exhibition was curated by Christopher Malone and was generously supported by SWEA New Jersey.*



## Pennsylvania Horticultural Society – Philadelphia Flower Show 2022

**Changing Exhibition Gallery, Jenny Lind Room, Linnaeus-Kalm Gallery, Grand Hall Balcony, Chicago Room: June 11 – June 19, 2022**

The PHS Flower Show, held in FDR Park, included numerous exhibitions throughout the galleries at ASHM. Pressed plants graced the walls of the Changing Exhibition Gallery, including works made by children. Miniature arrangements were on view inside the Linnaeus-Kalm Gallery, which featured small bouquets and other creations. Large pedestal arrangements surrounded the Jenny Lind Room including wonderful hats made of flowers and plants. The Chicago Room featured dried flower jewelry, one piece was inspired by the delicate Bridal Crowns that Swedish women wear during their wedding ceremony. The exhibition by The Philadelphia Society of Botanical Illustrators was displayed on the Museum Balcony. Several installations changed three times during the show.



## NEW DALA HORSE COLLECTION

A Dala horse collection on view in the ASHM Nord Library once belonged to Linda Honig of Vernon Hills, Illinois. Linda fell in love with the horses on her first trip to Sweden in the 1980s. Since then, she traveled to Sweden on multiple trips and brought the horses back each time. The pieces were made by several different small workshops in Nusnäs, a notable producer of Dala horses. Linda's collection includes horses of all different colors, sizes, body styles, postures, and painted patterns. One of the larger red horses was monogrammed by an artist and has Linda's name painted on the horse's neck. The collection represents Linda's lifetime-long attachment to this Swedish *hemslojd* tradition and the Swedish culture. The collection was donated by the Honig family in memory of Linda and ASHM is happy to be its new home.



## FBI RETURNS STOLEN REVOLVER TO ASHM

This year the ASHM recovered a stolen 1861 Colt Revolver that belonged to Swedish immigrant Major Nere A. Elfving, who fought in the American Civil War. It was stolen from ASHM in the 1970s by Thomas Gavin, who was recently convicted of multiple thefts in the 1960s and 70s. The revolver was part of a 50-year-old cold case cracked by the FBI in 2019. ASHM joined representatives from other museums for the Repatriation Ceremony at the Museum of the American Revolution in December. The artifacts were recovered through the efforts of the Federal Bureau of Investigation Art Crime Team - Philadelphia Division, the United States Attorney's Office of the Eastern District of Pennsylvania, and the Upper Merion Township Police Department. This revolver is now on view in the Chicago Room.



## CONTRIBUTIONS TO THE COLLECTION

- Collection of Tools and other family heirlooms belonging to Harry Lindberg and donated by Matthew Lindberg
- A wedding suit, family photo album, and cased photograph donated by Linda Fasteson
- Miniature Mora clock made from dried flowers and tree bark donated by Ray and Rita Marie Dennis
- Two pressed plant framed original artworks donated by Joy and Theresa Waldinger

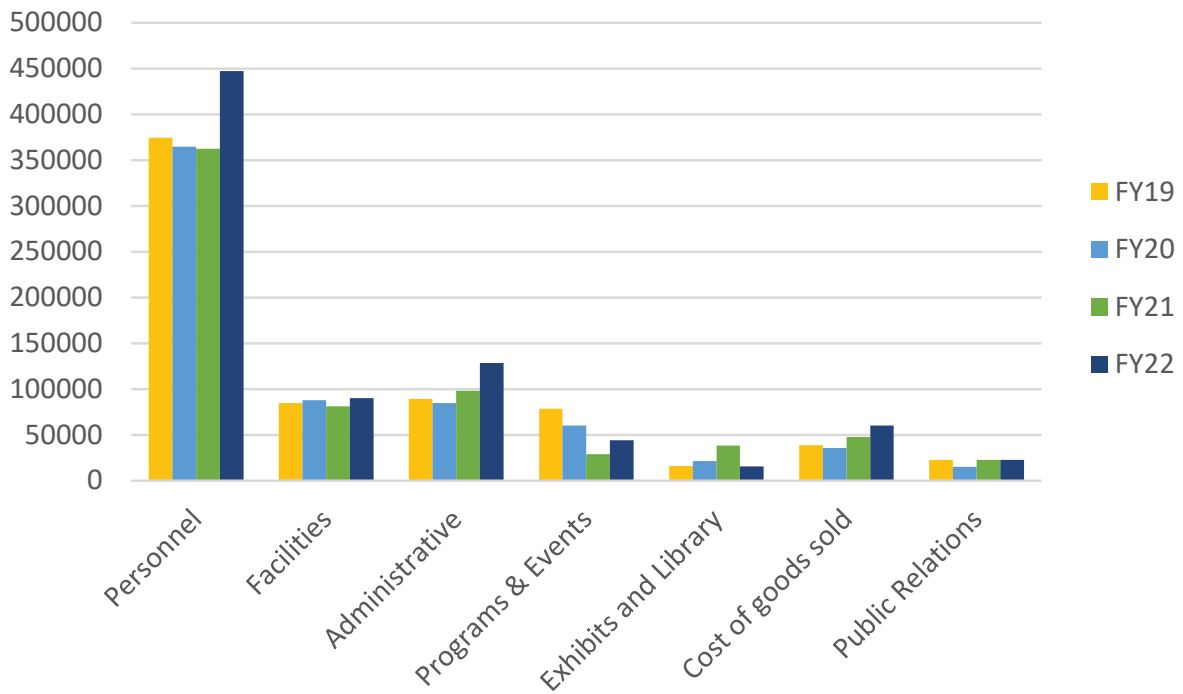


## GENEROUS BEQUESTS

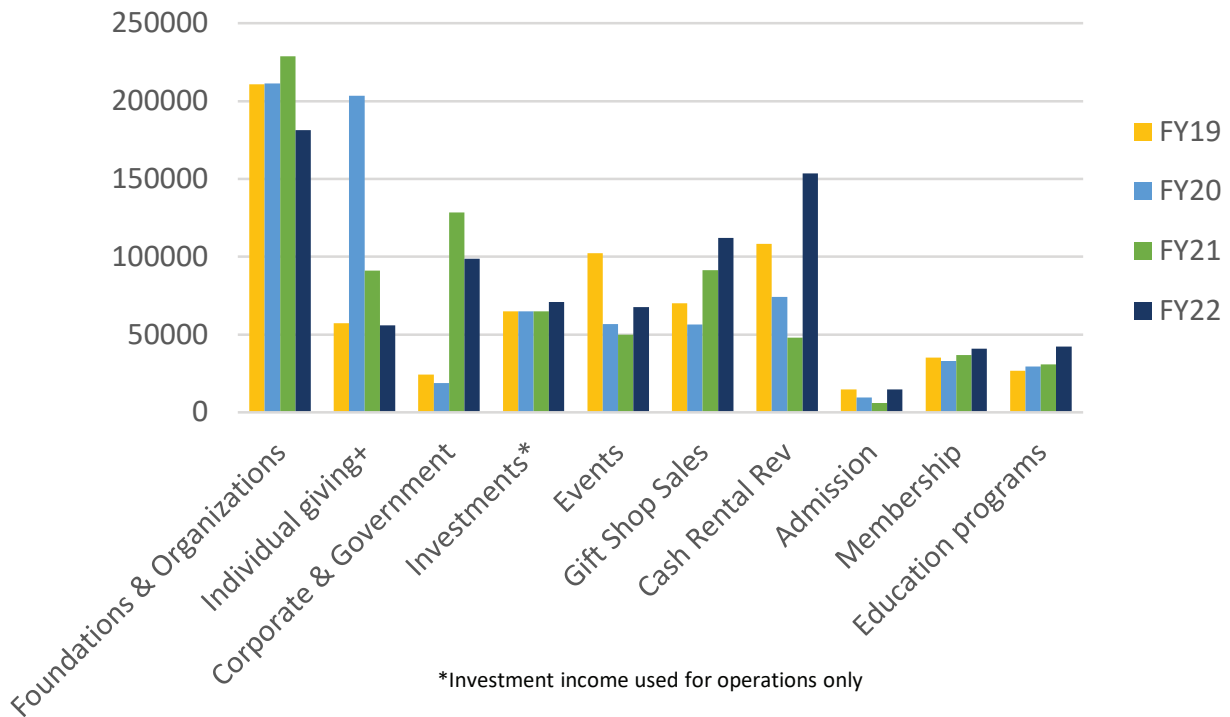
The ASHM was thrilled to receive two bequests in FY22 of \$44,506 from the Marie W. McCauley Charitable Remainder Unitrust and \$17,650 from the estate of John H. Hanovsky. Because neither donor specified how they wanted their gift to be used, the museum is able to use these gifts wherever they are needed most. The ASHM board plans to allocate a portion of the funds to help us with our strategic plan and capital campaign development. In addition, we will use some of the money from John Hanovsky to restore a window at the museum, so that his gift which he made in memory of his great-grandfather, John Zanders, and his great-great uncle Charles Zanders will have a visible presence through a plaque on the window sill. The balance of these donations will be invested so that the money will benefit the museum in the decades to come. Generous gifts like these from members of our community are so important to the long-term financial stability of the museum.

# MUSEUM FINANCIALS

## Expenses



## Revenue



## BOARD OF GOVERNORS

Fanny Warren, Chair  
Anna-Lena Bromberg, *Vice Chair*  
James Roebuck, Jr., *Vice Chair*  
Per Blomquist, *Secretary*  
James Walker, *Treasurer*  
Tracey Beck, *Executive Director*  
Sophia Bonde  
William Eaton  
Jorgen Flood  
John Foster  
Dawn Gould  
Karin Kornaga  
Monica Kruse  
Matthew Lund  
Thomas Nilsson  
Carl Rapp  
Ed Root  
Susan Satkowski  
Earl Seppala  
Abby Shaw  
Mary E. Wagner  
Ulf Åkerblom

### Ex-Officio Governors

The Honorable James Kenney,  
*Mayor of Philadelphia*

Aparna Palatino, *Deputy  
Commissioner of Capital  
Infrastructure & Natural Lands  
Management, City of Philadelphia*



## VOLUNTEERS

Fiscal year 2022 was certainly a bee hive of activity! Over 75 ASHM supporters gave their time and talents this year to make our work possible. While helping the day of an event is extremely valuable, it is also important to also acknowledge the incredible behind-the-scenes work our many volunteer committees and clubs accomplish. The Auxiliary and Midsommarklubben meet throughout the year to plan the logistics of Luciafest and Midsommarfest. The Smörgåsbeer and Spring Ting Committee work to engage and highlight diverse businesses from our community. Together all of the board committees consist of volunteers giving hundreds of combined hours throughout the year to keep the organization moving forward and fulfilling the mission. ASHM is extremely grateful for the wonderful planning and implementation work all our volunteers contribute!

In September, ASHM was proud to present the Amandus Johnson Service Award to Brigitta Davis, known to many as Gittan. She has a long and storied history with ASHM, beginning with her first visit in the 1960s for an exhibition opening, where she met the museum's founder and the award's namesake, Amandus Johnson. Gittan would later become involved as a volunteer in the 1980s working to expand the gift shop and to help communicate with callers and visitors in Swedish. Gittan joined the staff in 1988 and worked in various roles, including serving as Associate Director for many years before retiring in 2013. After retiring, Gittan remained a familiar face at the museum as an active volunteer at the front desk, as well as at many of our large annual events. Gittan has been an integral part of our volunteer core, serving as president of Midsommarklubben and a key member of the Spring Ting Committee.



# COMMITTEE MEMBERS & CLUB OFFICIALS

## Board Committees

### Buildings & Grounds Committee

Al Wulff, *Chair*  
Erwin Apell  
Per Blomquist  
Fred Hagan  
Matt Lund  
Ed Root  
Frank Sanders  
Theresa Stuhlman  
Jim Walker

### Compensation Committee

Matt Lund, *Chair*  
Bill Eaton  
Susan Satkowski

### Development Committee

Christian Roden, *Chair*  
Sophia Bonde  
Lauren Burnham  
Carin Foster  
Julie Johnson  
Kristina Mattila  
Kristina O'Doherty  
Sandra Pfaff  
Mary Wagner

### Finance & Audit Committee

Erik Muther, *Chair*  
Bill Eaton  
John Foster  
Julie Gunderson  
Matt Lund  
Sandra Pfaff  
Mary Wagner  
Jim Walker  
Hampus Öberg

### Membership Committee

Fanny Warren, *Chair*  
Kristina Antoniadis  
Lauren Burnham  
Elin Jeantet  
Roberta Johnson  
Sandra Pfaff  
Ed Root  
Ingrid Rosenback  
Earl Seppala  
Ginny Swedberg

### Museum Committee

Abby Shaw, *Chair*  
Anna-Lena Bromberg  
Carin Foster  
Kirsten Jensen  
Christopher Malone  
Jennifer Zwilling

## Nominating Committee

Bill Eaton, *Chair*  
Monica Kruse  
Carl Rapp  
Susan Satkowski  
Earl Seppala  
Ulf Åkerblom

## Strategic Planning

Monica Kruse, *Chair*  
Per Blomquist  
Anna-Lena Bromberg  
Lauren Burnham  
Bill Eaton  
Jorgen Flood  
Elin Jeantet  
Rachel Kiskaddon  
Chris Malone  
Erik Muther  
Thomas Nilsson  
Christian Roden  
Jim Roebuck, Jr.  
Frank Sanders  
Abby Shaw  
Jim Walker  
Fanny Warren  
Al Wulff  
Ulf Åkerblom

Fanny Warren, Chair and Tracey Beck, Executive Director, are ex-officio members of all board committees.

## Event Committees

### Pea Soup Committee

Leonard Busby  
Dawn Gould  
Michael Harrar

### SmörgåsBeer 2021

Kristin Pickell, *Chair*  
Lauren Burnham  
Elin Carlsson  
Dawn Gould  
Megan Lassiter  
Scott O'Hara

### Spring Ting Committee

Anna-Lena Bromberg, *Chair*  
Kristina Antoniadis  
Tracey Beck  
Susan Ethridge  
Elin Jeantet  
Rachel Kiskaddon  
Monica Kruse  
Mary Anne Carlson Morgan  
Kristina O'Doherty  
Sandra Pfaff  
Mary Anne Powell  
Caroline Rossy  
Fanny Warren

## Clubs

### Auxiliary Board

Dawn Gould, *President*  
Tina Cook, *Secretary*  
Linda Alexy, *Treasurer*  
Kristina Kalb, *Corresponding Secretary*  
Ken Alexy  
Elisabeth Brown  
Allison Clausen  
Carol Duncan  
Kay Ford  
Elin Gavaghan  
Karin Hampel  
Kristina Jansson  
Donna Johnson  
LaVonne Johnson  
Karin Kornaga  
Donna O'Connell  
Kristina O'Doherty  
Birgitta Paddack  
Donna Popp  
Mary Anne Powell  
Ingrid Rosenback  
Debbie Soukup  
Virginia Swedberg  
Susan Sjöstrom  
Agnetha Thompson  
Fanny Warren

### Genealogy Club Officers

Kristina O'Doherty, *President*  
LaVonne Johnson, *Vice President*  
Tod Benedict, *Secretary/Treasurer*

### Midsommarklubben

Karin Kornaga, *President*  
Görel Bengtzon, *Vice President*  
Tina Cook, *Secretary*  
Ingrid Cagan, *Treasurer*  
Kristina Antoniadis  
Elisabeth Jonsson Brown  
Elin Carlsson  
Catharina Copeland  
Birgitta Davis  
Carin Foster  
Ulla Heinicke  
Kerstin Hoeldtke  
Elisabeth Hohman  
Maj Britt Lautman  
Gullbritt Mengelbier  
Gun-Marie Nalsen  
Barbro Pollock  
Kjerstin Sama  
Annika Saracini  
Ulla Britt Schroyer  
Inger Stone  
Margaretha Talerman  
Agneta Thompson  
Eva Wattenmaker  
Birgitta Wilson

# MEMBERS, DONORS & GIFTS IN-KIND

The generosity of our community of supporters is vital in our ability to carry out our mission. The following individuals, foundations, organizations and corporations have given us gifts, services and grants to support our operating needs, endowment, events and special projects above and beyond basic membership dues.

## \$100,00+

Anonymous

## \$10,000- \$99,999

Barbaro Osher Pro Suecia Foundation  
Edwin & Marie McCauley Charitable  
Remainder Trust  
Estate of John Hanovsky  
Midsommarklubben  
Paul Muther & Ulla Dagert-Muther  
Philadelphia Cultural Fund  
Red Moose Charitable Trust

## \$5,000- \$9,999

Auxiliary of the ASHM  
Duane Malm  
Mary McCoy  
Pennsylvania Historical &  
Museum Commission  
Rosenlund Family Foundation  
Susan Sjostrom

## \$1,000 - \$4,999

Anonymous  
Kristina & John Antoniadis  
Karin Bergqvist  
The Capozzi Scarmuzza Foundation  
Margaret Copeland  
Kay Ford  
John & Carin Foster  
George & Esther McFarland Foundation  
Richard & Pia Halloran  
A. Monica Kruse  
Barbro & Ernst Larsson  
Britta Mattson  
Merck Foundation  
Erik & Nicole Muther  
Margot Patterson  
Kathleen Petrilli  
Sandra Pfaff  
Carl D. Rapp Family Fund  
Pamela Sjogren  
SWEA New Jersey  
SWEA Philadelphia  
Swedish Council of America Fund at the  
Minneapolis Foundation  
Margaretha Talerman  
Richard Waldron  
James & Sofia Walker  
Fanny Warren  
Al Wulff

## \$500- \$999

Anonymous  
Assured Partners of New Jersey  
Florence Beck  
William & Tracey Beck  
Gregory Brown  
Ken & Kerstin Cook  
Gordon & Jane Downing  
Paul & Janet Engstrom  
Goshen Mechanical Contractors  
Ingrid & David Hang

Kristina G. Hofmann  
W. Robert & Judith Lang  
Jenny Lind Club of Michigan  
Ruth Lindeborg & Leonard Busby  
New Sweden Alliance  
Nord Cascading Unitrust Fund of Central  
Carolina Community Foundation  
John & Kristina O'Doherty  
Elsa Orescan  
Hope Rosenlund  
Kristin Schroeder  
Earl & Sylvia Seppala  
Virginia Swedberg  
Cynthia & James Traverso  
Verdandi Lodge No. 3, I.O.S.  
Stillman Volvo

## \$250- \$499

Erwin & Ulla-Britt Apell  
Marianne Baeckstrom  
David & Ingrid Beery  
Anna-Lena Bromberg  
Elisabeth Brown  
Donna Cashdollar  
Jens & Allison Clausen  
Ted Davis  
Gerald Forney  
Christina Hagman Odlander  
Genevieve Haines  
Deborah Hang  
Samuel W. Heed  
Ulla Heinicke  
Nils G. Herdelin, Jr.  
Tredyffrin Easttown Historical Society  
Kathi & Richard Keefe  
Maria & Scott Larsen  
Sandra Lazo  
Doris Lehman  
John Lundin  
Ulla Martz  
Kirstin Mattson  
Mary Anne Carlson Morgan  
Karen Morgan  
Roberta Petusky  
Mary Anne Powell  
Ingrid Rosenback  
Kirstin Schroeder  
Kristina H. Smith  
Roger & Carol Thorne  
Anne Wattman  
Kim-Eric Williams  
Birgitta Wilson  
Ulf Åkerblom

## \$100- \$249

Linda & Kenneth Alexy  
Sally Allenstein  
Ann Anderson  
Frank & Karen Anderson  
Christer & Patty Baeckstrom  
Eleanor Barlow  
Helene Yocum Basile  
Henry & Deborah Belusa  
Alison Bennett  
Per & Angela Blomquist  
Bruce & Cynthia Brandt

Sandra E. Brown  
Robert & Ingrid Cagan  
Lisa Caplan  
John Chappo  
Alice Christensen  
Margaret Churchville  
Hilma Cooper  
Catharina Copeland  
Sylvia Davenport  
Morris & Gittan Davis  
Mr. & Mrs. Andrew De Boer  
Ed Devinney  
John William Dickey  
Kathi Drozd  
Peggy Franck  
Margaret M. Friel  
Tina Glisovic-Aplenc  
Lennart A. Hahr  
Robert & Faith Hedin  
James Hill  
Christina Holm  
Stephen & Sharon Holt  
William L. Honig & Elizabeth TG Yijuan Li  
Charitable Trust  
Thomas & Mary Ann Hudson  
Jayne & Peter Hunt  
Gudmund Iversen  
Margaretha Joelsson  
Roberta Johnson  
Karin Kornaga  
Mia Lehmann  
Matthew Lund  
Mark Lundgren  
Roger & Jennifer Månsson  
Marlin R. Mattson  
David Morrison  
Dan & Allison Muller-Frank  
Timothy Nurvala  
Jere & Birgitta Paddock  
Thomas & Julia Patterson  
Annika Pelme  
Barbro & Wayne Pollock  
Linda Raffa  
Herbert R. & Zofia Rambo  
Meryl & Joseph Rodgers  
Edith Rohrman  
Jason & Carrie Rozes  
Ellen T. Rye  
Faith Sandstrom  
Susan Satkowski  
Lori Shaer  
Jim Sinex  
John & Susan Soffronoff  
Patricia Spampinato  
Jean Spoolstra  
Shirley Stengel  
Inger Stone  
Ann-Charlotte Storer  
Linda Stutz  
Marge Thorell  
Linda Vizi  
Gretchen & Luke Walker  
Sargit Warriner  
Melissa & Tom Weismann-Hooper  
Eunice Winters  
Inger Zeller

## Under \$100

Sven H.E. Borei  
Ragna & Richard Brown  
Tracy & Steve Carr  
Martha Clark Goss  
Lorraine Conley  
Nancy & Richard Cox  
Domenica DiMeo  
Susan Durand  
William & Vivianne Englund-Callahan  
Jorgen Flood  
Barbara E. Good  
Dawn Gould  
Veronica Greenbaum  
Janet Harriger  
Christine Hobbs  
Lisa & Bill Hoffman  
Sylvia Holteen  
Catherine Hugo  
Alice Hurwitz  
Lois J. Johnson  
Delmar & Irene Karlen  
Susan Keyser  
Richard Kiger  
Gunilla Knutson  
Beth Krewson  
Norman Marcus  
John & Eleanor McCann  
Ulla Britta & Jeremiah McCarthy  
Roger & Margareta McCrea  
Ellyn Miller  
Marjorie Miller  
Rosemary & Jeffery Moller  
Thomas Nilsson  
Juta Nolan  
Donna E. O'Connell  
James Oriordan  
Maud Palmer  
Carolyn Peterson  
Robert & Alice Powell  
John & Kerstin Radel  
Christian Roden & Norman Lawrence  
James R. Roebuck, Jr.  
Edward Root  
Robert Rudin  
Birgitta Sama  
Lynne Schaefer  
David & Mary Segermark  
Hillary Shade  
Randi Stanley  
Theresa Stuhlman  
Carl-Erik Sundberg  
Karin & David Svahn  
John & Nancy Swaney  
Selma Olsen Tepper  
Amy & Harry Verngren

## Life Members

Anonymous  
David L. Anderson  
Kristina & John Antoniadis  
Mr. & Mrs. Olof Bergqvist  
Ms. Karin Bergqvist  
Countess Clarissa Bonde  
W. Keen Butcher  
Mr. Robert G. Cato Jr.  
Jens & Allison Clausen  
Mr. Paul Muther & Dr. Ulla Dagert-Muther  
Mr. Leroy W. Dahlberg  
Sylvia E. Davenport  
Ruth Ekstrom  
Jan & Lillemor Essunger  
Ms. Marna Feldt  
Kay Ford  
Len & Elly Gustafsson

Mr. & Mrs. David Hang  
Samuel & Janet Heed  
Douglas Hellstrom  
Dr. John Hemmingson Hill  
Dr. Robert Nyden Hill  
Jenny Lind Club of Michigan  
Kristina & Charles Kalb  
Mr. & Mrs. Joseph C. Kohn  
Monica & Lakota Kruse  
Mrs. Mark Martz  
Britta A. Mattson  
Prof. Ruth Meixner-Bird  
Mrs. Ellen Peterson Morris  
Erik & Nicole Muther  
Dr. Eric Neilson  
Cindy Nord  
Barbro S. Osher  
Dr. Georgiana Peacher  
Mr. Herbert V. Peterson, Jr.  
Mrs. Sandra Pfaff  
Jea & Stephanie Rosenlund-Shim  
Mr. Karl E. Schober  
Earl & Sylvia Seppala  
Wade R. Sjögren  
Pamela Sjogren  
Margaretha Talerman  
Ms. Ruth M. Taylor  
Fanny Warren  
Rev. Dr. Kim-Eric Williams

## Gifts in Kind

The Academy of Natural Sciences  
Kristina Antoniadis  
Britt Apell  
Dr. Leroy Arnold  
ASHM Auxiliary  
Avalon Golf Club  
Bar Hygge  
Barnes Foundation  
Bente Bladt  
Karin Bergesen  
Helena Berggren  
Bo Concept  
Myra Bohnen  
Brandywine River Reps  
Anna-Lena Bromberg  
Elisabeth Brown  
Sandra Brown  
Bryn Mawr Film Insititute  
Bywood Seafood  
Mary Anne Carlson Morgan  
Cartesian Brewery  
Casey's Public House  
Chesapeake Bay Maritime Museum  
Context Travel  
Bill Curran & Tamara Sede  
Claudia Curtis  
Dave & Buster's  
Donna Draper  
Double Tree by Hilton  
Lyn Eaton  
Englund's Men's Apparel  
Essity  
Pauline & Jim Eversmann  
Frazer Antiques  
The General Warren Inn  
Giant Markets  
Dawn Gould  
The Grand Opera House  
Christina Gravidahl  
Gudrun Sjöden  
Hassis Men's Shop  
Hedgerow Theatre Company  
Ingebretson's Scandinavian Gifts & Foods  
Ithan's Market  
J. McLaughlin  
Jane Chalfont  
Elin Jeantet  
Jeffrey Miller Catering

Adam Joseph & 6abc  
Kristina Kalb  
Kalaya Restaurant  
John Keegan  
Sharon Kvist  
La Locanda Ristorante Italiano  
Liquid Alchemy  
Little House Shop  
Live! Casino & Hotel  
Long Drink  
Longwood Gardens  
Magic Threads Consignment  
Midsommarklubben  
Mostardi Nursery  
Museum of Illusion  
Museum of the American Revolution  
Mark Mussari  
Erik Muther  
National Constitution Center  
NorrDesign  
O & H Danish Bakery  
Orrefors  
Opera Philadelphia  
Kristina O'Doherty  
Annika Pelme  
Penn Museum  
Erik Persson  
Pennsylvania Horticultural Society  
Sandra Pfaff  
Philadelphia Eagles  
Philadelphia Flyers  
Philadelphia Phillies  
Pop's Homemade Water Ice  
Mary Anne Powell  
Produce Junction  
Randi's Unique Gifts  
Rekorderlig  
Remark Glass  
Ingrid Rosenback  
Caroline Rossy  
Salon Bellissima  
Scott Arboretum  
Suzanne Seeley  
She's Birdie  
Sjöblom Winery  
Snyder Ace Hardware  
Statesman Ties  
Susan Swanson Swartz  
Swedish Colonial Society  
Sweetish Candy Store  
Agneta Thompson  
TinyDynamite  
Total Wine & Spirits  
Trader Joe's  
Triple Bottom Brewery  
Two Locals Brewing Company  
Union League of Philadelphia  
Urban Jungle  
Linda Vizi  
Jay Waldinger  
Fanny Warren  
Wild Bird's Unlimited  
Winterthur Museum, Garden & Library  
Woodloch Resort  
Ellen Wurster  
Yards Brewery  
Ulf Åkerblom

*We appreciate the generosity demonstrated by those on the preceding lists and have made every effort to ensure accuracy. Please contact Tracey Beck, Executive Director, if you discover an error.*

## ASHM STAFF

Tracey Beck  
*Executive Director*

Daniel Barnum (beginning June 2022)  
*Gift Shop & Weekend Manager*

Lauren Burnham  
*Assistant Director*

Elin Carlsson  
*Marketing Assistant & Weekend Manager*

Olivia Grasso (beginning May 2022)  
*Curatorial Assistant*

Ronnah Howard (thru March 2022)  
*Weekend Manager*

Catherine Hughes (thru February 2022)  
*Weekend Manager*

Elin Jeantet  
*Membership & Visitor Services Assistant*

Meghan Kelley (January-March 2022)  
*Marketing Assistant*

Rachel Kiskaddon  
*Education & Public Relations Manager*

Christopher Malone  
*Curator*

Frank C. Sanders  
*Facility & Event Manager*

Roger Walsh  
*Weekend Manager*

Lillian Young (thru August 2021)  
*Education Assistant*

